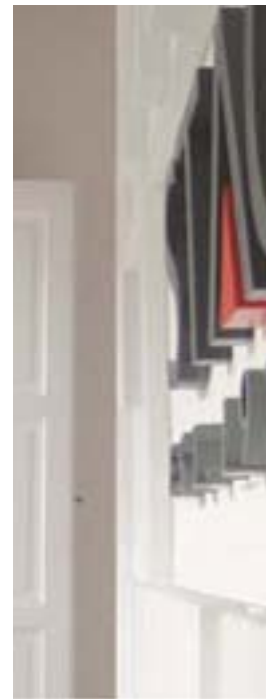


**Stag** is a leading premium interior fit-out specialist and manufacturer of exquisite joineries and quality shopfittings.



Since its establishment in 1973 in Australia, Stag continues to develop and expand the skills in our trades. Our commitments to quality and service to our clients has gained recognitions among many of the international luxury retail brands and is respected in the industry internationally.

**Our capabilities** extends to regions of Australasia, Asia, Europe, Middle East and the Pacific Rims with proven track records in countries like Australia, Singapore, America, China and many others.



The growth of demands for luxury brands goods internationally over the last few years had brought about the rapid growth of Stag. Our clients' expansions into the global arena and their trusts in Stag to provide support to them in their worldwide projects has led us to set up offices and manufacturing facilities in the different regions.

An **extensive**  
**infrastructure** and a  
**passionate team** make  
our abilities to deliver  
unrivalled.



With a team of over 90 highly-skilled staff located in 4 different offices and 2 manufacturing facilities, Stag manufactures and supplies high quality shopfittings to various sectors in the retail market as well as providing total project management and priority back up service for all products.

Stag's approach to **achieving**  
**SUCCESS** to any project is  
providing **the right team**.

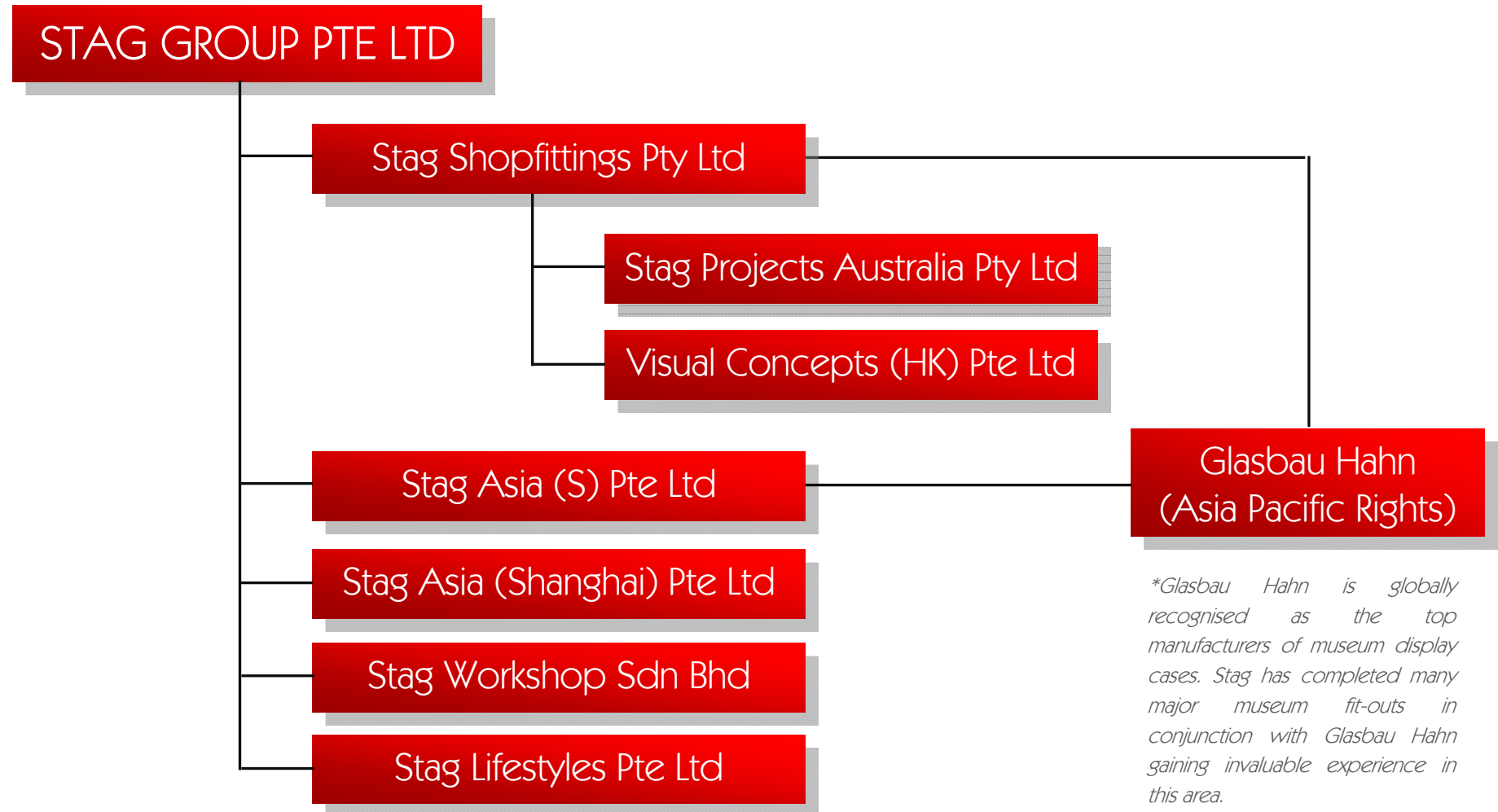
We will provide a team whom we believe is not only adequate in number, but have depth of skills to enable a well-managed delivery ensuring that the works are properly coordinated and completed on time. Our team has the experiences and track records in delivering works of similar nature and have all worked with the design consultants. The team will be fully dedicated to the project from the start to the finish.

The team will be led by a Project Director supported by Project Managers and full-time Production and Technical Coordinator. The Project Managers will report directly to the Project Director, who will be providing core skill support and Employer interface.

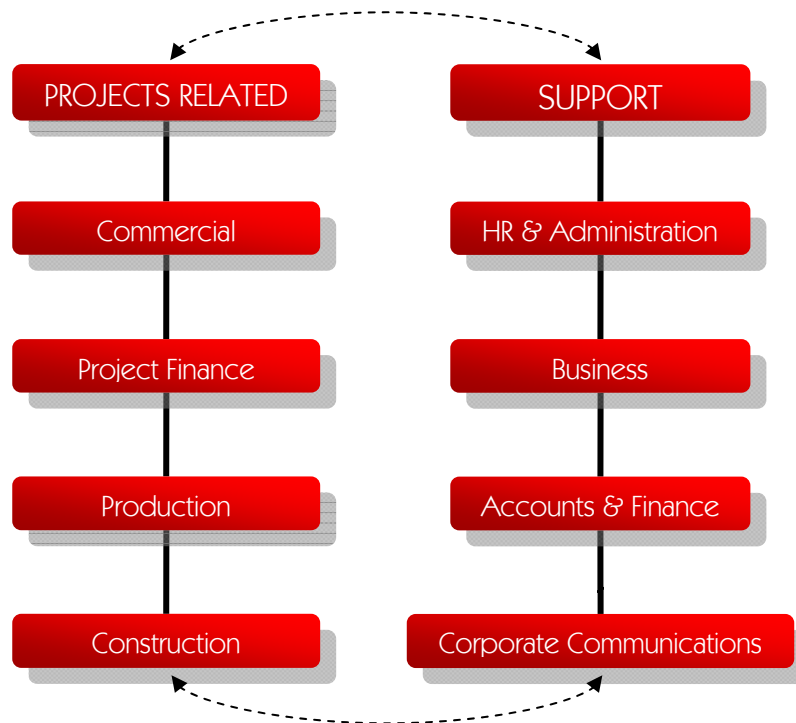
Our safety officer will oversee and be responsible for ensuring the safe delivery of the project ensuring all sub-contractors adhere to Stag's safety policy.



# Group Structure



# Organisation Support Structure



## PROJECTS RELATED

### Commercial

- Estimating & Costing
- Tender
- Proposal

### Project Finance

- Procurement
- Financial Management
- Trade Contractors

### Production

- Shop Drawings
- Millworks

### Construction

- Technical Planning
- Construction
- Logistic
- Maintenance
- Health & Safety

## SUPPORT SERVICES

### Human Resources & Administration

- Human Resources
- Administration
- Quality Management Systems

### Business Development

- Business Planning
- Sales
- Marketing
- Customer Services

### Finance & Accounts

- Finance
- Accounts

### Corporate Communication

- IT
- Internal & External Communication
- Marketing

services and achievements

# Services



Project Management Stag's project management team is responsible for all aspects of the job including scheduling, account management, delivery and installation.

We recognize the need for absolute certainty in the delivery of a project and its ability to perform with extraordinary levels of reliability is of paramount importance.

Our Project Managers are highly competent and efficient in disciplines of planning, organising and managing resources to bring about the successful completion of the project goals and objectives

Production For over 35 years, Stag had been committed to manufacturing the finest and highest quality millworks.

Our 2 plants totalled over 80,000 square feet with the ability to grow as production demand increases.

Coalesced with the skills of our highly competent technicians, Stag is able to meet any architectural and aesthetic requirements required by our client.



Technical Designs Stag's Design Team consist of experienced Architects and Technical Designers who will work with our client's design team from the inception stage to offer solutions from technical designs, working drawings and documentations. We strive to provide the most accurate and precise drawings for construction and fabrication which results in zero defects at completion and upon handing over.



Our **achievements** can be seen from the numerous **awards** and **recognitions** from professional bodies and from our clients.

### Qualifications

Stag Asia (S) Pte Ltd is BCA's Contractor Registered Contractors under CR06 (Interior Decoration) with a tendering limit of L3 (S\$4.5million)

Stag Asia (Shanghai) is in the process of application for Grade 3 Construction Certification (Interior Decoration) in China

### Awards

- |      |   |
|------|---|
| 1998 | Business Excellence Award for Export Performance for the City of Maroondah  |
| 2001 | Winner – Excellence in Building Awards for Interior Finishes for National Museum of Australia from MBA of ACT.              |
| 2002 | Winner – ASOFIA Victorian Interior Fitout of the Year for Seamus McPeake's Irish Pub.                                       |
| 2004 | Winner – National Interior Fit-out of the year for best fit-out in Australia as awarded by ASOFIA for Tiffany & Co. Sydney. |
| 2004 | Winner – Interior Fit-outs over \$ 500 K for Tiffany & Co., Sydney.   |

### Projects Completed

Tiffany & Co. 52 Asian / Pacific Stores, 5 South American Stores, 7 Australian Stores, 1 European Store, 2 US Stores

Estee Lauder Group of Companies Over 100 Australian installations, Over 50 Asian Pacific installations

Swatch SMH International 12 Australian installations, 1 New Zealand Store.

# Our Gospel

## Meetings

Meetings are a fundamental part of successfully completing a project to ensure that the correct information are being delivered to those that require it, along with efficient tools to monitor progress of issues. Stag would chair the following meetings all which are controlled with agenda's and that produce accurate and meaningful minutes:

- Design & Procurement Review Meetings
- Landlord Meeting
- Progress Meetings
- Works Contractor Co-ordination Meetings
- Pre-completion Inspection Meeting
- Handover/Practical Completion Meeting

## Reporting

We provide a fully integrated team to support you and your objectives, to effectively operate and communicate with the Professional Team and Clients.

With any projects, it is imperative that clear, accurate and regular reporting procedures are adopted to ensure the Team kept abreast of all project developments. We therefore would see ourselves playing a pivotal role in administrating progress and control reports during the course of the project.

## Quality Assurance

We are passionate about quality and take pride in our attention to detail. Over many years, we have refined our processes and procedures to ensure that we can produce projects of the highest quality.

Our approach to delivering compromises of :

- Process  
From design to handover the delivery of a quality product is dependent on a clearly defined series of processes
- People  
The right team with the right attitude, skills and training to manage the process and the experiences and knowledge to deliver a quality product.
- Planning  
Developing and agreeing to a schedule, which recognizes quality as a primary driver and create time in the programme to enable the quality processes to be incorporated.

highlighted projects

Watch & Jewellery

Tiffany & Co.	Singapore	Apr 2002 to Aug 2002	Singapore Flagship Store
Tiffany & Co.	Honolulu, Hawaii	Jul 2002 to Nov 2002	Hawaii Flagship Store
Tiffany & Co.	Guam, America	Jul 2003 to Oct 2003	Guam Flagship Store
Tiffany & Co.	London, England	Dec 2003 to Apr 2004	London Flagship Store
Tiffany & Co.	Sydney, Australia	Feb 2004 to Sep 2004	Australia Flagship Store
Tiffany & Co.	Brisbane, Australia	Mar 2005 to Jun 2005	-
In Vogue	Australia	Apr 2006 to Jun 2006	Fixtures Rollout
Franck Muller Geneve	China	Jul 2006 to Apr 2006	Point of Sales Rollout
Franck Muller Geneve	Beijing, China	Dec 2006 to Mar 2007	Beijing Flagship Store
Tiffany & Co.	Singapore	Dec 2006 to Feb 2007	-
Shamwari Diamonds	Macau, China	Sep 2007 to Dec 2007	Venetian Sands, Macau
Tiffany & Co.	Tianjin, China	Sep 2007 to Dec 2007	-
Franck Muller Geneve	Shanghai, China	Oct 2007 to Dec 2007	Shanghai Flagship Store

Tiffany & Co.	Chengdu, China	Oct 2007 to Mar 2008	-
Shimansky Diamonds	Macau, China	Nov 2007 to Dec 2007	Venetian Sands, Macau
Tiffany & Co.	Shenyang	Nov 2007 to Feb 2008	-
Tiffany & Co.	Perth, Australia	Feb 2008 to Jul 2008	Asia Production (Millworks)
Shamwari Diamonds	Macau, China	Apr 2008 to Jul 2008	-
Tiffany & Co.	Hong Kong	May 2008 to Oct 2008	-
Shimansky Diamonds	Macau, China	May 2008 to Aug 2008	-
Tiffany & Co.	Dubai, UAE	Jun 2008 to Oct 2008	Trade Partner
Tiffany & Co.	Hong Kong	May 2008 to Jun 2009	-
Tiffany & Co.	Jeddah, Saudi Arabia	Oct 2008 to Feb 2009	Trade Partner
Tiffany & Co.	Dharan, Saudi Arabia	Oct 2008 to Feb 2009	Trade Partner
Bulgari	Harbin, China	Mar 2009 to May 2009	-
Bulgari	Wenzhou, China	May 2009 to Jul 2009	-



Client

Tiffany & Co.

Location

Sydney, Australia

Type of Works

GC and Fit-Out Works

Completion Date

Sep, 2004

Remarks

2004 Winner – ASOFIA National  
Interior Fit Out of the Year  
2004 Winner – ASOFIA Interior Fit  
Out (A\$500,001 & Over)





Client

Franck Muller Geneve

Location

Shanghai, China

Type of Works

GC and Fit-Out Works

Completion Date

Dec, 2007

Remarks

Shanghai Flagship Store





Client

Tiffany & Co.

Location

Canton Road, Hong Kong

Type of Works

GC and Fit-Out Works

Completion Date

Jun, 2009





Client

Bvlgari

Location

Wenzhou, China

Type of Works

Fit-Out Works

Completion Date

Jul, 2009



Luxury Fashion

Giorgio Armani	Melbourne, Australia	Jan 2005 to Mar 2005	-
De Cjuba	Melbourne, Australia	Apr 2005 to May 2005	-
Calvin Klein	Australia	Jun 2005 to Jul 2005	Fixtures Rollout
Prada	Australia	Jul 2005 to Aug 2005	Fixtures Rollout
Zimmermann	Melbourne, Australia	Feb 2007 to May 2007	-
Lisa Ho	Melbourne, Australia	May 2007 to Aug 2007	-
Elle Macpherson	Australia	Sep 2007 to Dec 2007	-
Prada	Melbourne, Australia	Nov 2007 to Dec 2007	-
Emporio Armani	Melbourne, Australia	Mar 2008 to Nov 2008	-
Prada	Melbourne, Australia	Aug 2008 to Feb 2009	-
Cole Haan	Jeddah, Saudi Arabia	Oct 2008 to Feb 2009	-
Chanel	Sydney, Australia	Mar 2009 to Jun 2009	-
Coach	Jeddah, Saudi Arabia	Mar 2009 to Jun 2009	-



Client

Prada

Location

Melbourne, Australia

Type of Works

GC and Fit-Out Works

Completion Date

Sep, 2008



Client

Chanel

Location

Sydney, Australia

Type of Works

GC and Fit-Out Works

Completion Date

Jun, 2009





Others

## Cosmetics

Estee Lauder Group	Sydney, Australia	Jun 2004 to Aug 2004	-
MAC	Adelaide, Australia	Oct 2004 to Jan 2005	-
MAC	Gold Coast, Australia	Oct 2005 to Nov 2005	-
Jo Malone	Sydney, Australia	May 2006 to Jul 2006	-
Estee Lauder Group	Melbourne, Australia	Jul 2006 to Nov 2007	-
Estee Lauder Group	Brisbane, Australia	Jul 2007 to Sep 2007	-
Jurlique	Australia	Oct 2007 to Feb 2009	Stores Rollout

## Others

Myers Stores	Melbourne, Australia	Dec 2005 to Jan 2006	Departmental Stores
Jo Bailey	Australia	Dec 2005 to Feb 2006	Luxury Hair Salons
David Jones	Melbourne, Australia	Jul 2006 to Sep 2006	Departmentall Store

our locations

OFFICE :

Australia

STAG SHOPFITTINGS PTY LTD  
238 Canterbury Road  
Bayswater  
Victoria 3153

P +61 3 9729 8777  
F +61 3 9720 4917

Singapore

STAG ASIA (S) PTE LTD  
39 Kim Yam Road  
Singapore 239345

P +65 6744 0777  
F +65 6744 0677

Shanghai

STAG ASIA (SHANGHAI) PTE LTD  
Room 307 Block 2 Parkspace  
No. 169 Mengzi Road  
Shanghai 200023

P +86 21 6418 0777  
F +86 21 6418 9994

FACTORY :

Australia

STAG SHOPFITTINGS PTY LTD  
238 Canterbury Road  
Bayswater  
Victoria 3153

P +61 3 9729 8777  
F +61 3 9720 4917

Malaysia

STAG WORKSHOP SDN BHD  
No.32 Jalan Mega ¼ Taman Perindustrian  
Nusa Cemerlang 81550 Gelang Patah  
Johor Malaysia

P +60 7 531 9777  
F +60 7 531 9771